

Linx TT5+ (TT1000 53mm)

Barcodes, Graphics Film Printing

- No factory air required improving quality and print consistency
- Simple operation - Icon based large touchscreen
- Swift ribbon changeovers due to unique cassette design



**THERMAL TRANSFER
OVERPRINTERS**



Next Evolution of Linx TTO Coders

The New Linx TT1000 53 Thermal Transfer Overprinter is a powerful upgrade from the class leading TT5, ideal for achieving high quality, long lasting date, batch and barcodes on a range of flexible packaging materials.

Whilst maintaining the core benefits of its predecessor, this enhanced upgrade boosts a number of useful new features extending its capability, adaptability and performance.

Offered in a 53mm printhead, its sets a new standard for variable information such as date and batch coding onto a range of bags, pouches and flow wrapping.

Ideal for a wide variety of applications, across snack foods, confectionery and pharmaceutical sectors. You can rest assured that your TTO will produce clear, consistent and durable codes with every print run.

Lower Cost of Ownership

The new airless design eliminates the cost and complexity commonly associated with older pneumatic alternatives and as this is electronically adjusted through the settings, also improves the consistency of print quality.

Retaining the efficient clutch-less bi-directional ribbon drive of the former TT5, the TT5+ reduces the potential for ribbon breakages and wastage resulting in lower operating costs.

With the potential to fit ultra-long ribbon lengths of up to 1,200m* reduces the frequency of unplanned stoppages due to ribbon changes helping to increase production line efficiency and output.

Simplicity

The refined cassette maintains its patented 2 roller thread but is now 25% lighter and incorporates a longer 3-part guiding pin making handling during change-overs even easier.

With a large touchscreen, the TT5+ is even easier to use whilst maintaining its compact printer size, saving time, space and money. The simple icon-based interface is easy to use and needs minimal manual intervention to set up or change messages.

Exceptional Flexibility

The controller can also be detached from the power base to allow for even more flexible placement around your packaging machines.

Capable of switching between intermittent and continuous motion printing and left-hand or right-hand operation, the TT5+ provides greater flexibility for businesses that need to future proof their investment in film coding solution.

Performance Upgrades

Depending on the motion (intermittent or continuous) of the integrated packaging machine, the new TT5+ has upgraded performance features such as higher throughput, faster linear speeds and longer print areas lengths, able to meet your evolving business needs

Insight

In addition to the advanced printer diagnostics of the former TT5, the TT5+ is now fitted with a new printhead health diagnostic that provides better insight into thermal printhead performance and can identify if dead pixels (that can occur over extended periods) are within the printable message zone allowing for operator intervention.

*Depending on ribbon grade



code



check



capture



care 24x7

1300 263 464

www.matthews.com.au


matthews
intelligent identification



Technical Specifications Linx TT5+ (TT1000 53mm)

Dimensions (mm)

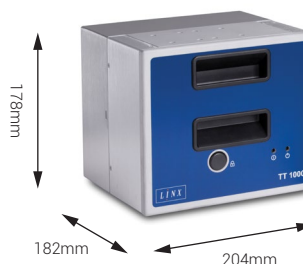
Controller Front Elevation



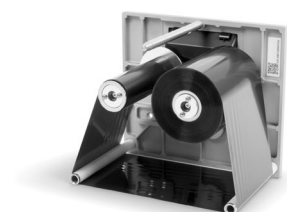
Controller Top Elevation



TT1000 Printer



Ribbon Cassette



Performance	
Printhead	55mm, 300dpi, 12 dots/mm
Ribbon width	20mm - 55mm
Maximum ribbon length*	1,200 metres
Unique solid-state ribbon drive	•
Intermittent / continuous motion	•
Print Area - Intermittent motion mode ^A	53mm (W) x 75mm (L)
Print Area - Continuous motion mode ^A	53mm (W) x 300mm (L)
Print Speed - Intermittent motion mode*	10mm/sec - 800mm/sec
Print Speed - Continuous motion mode*	1mm/sec - 1000mm/sec
Cable length (between printer and controller)	3 metres (5m option)
High throughput modes configurable by software	•

General Features			
Touchscreen 8.0" Full Colour WVGA (800x480) LCD	•	On-board diagnostics	•
WYSIWYG print preview	•	Off-line set up and parameter storage	•
Clutchless bi-directional ribbon drive	•	Multiple operator languages	•
Simple ribbon webbing	•	Job selection and database support as standard	•

Programming & Printing Facilities			
Image Design Software	◦	Ribbon save functionality (3 types)	•
Full downloadable font support for Windows TrueType (including multiple languages and unicode support)	•	Auto best before date calculation and concession management	•
Fixed, variable and merged text fields	•	Multiple graphic formats supported - any size up to maximum print area	•
Link fields to databases	•	Barcodes EAN 8, EAN 13, UPC-A, UPC-E, Code 39, EAN 128, Code 128, ITF, RSS (including 2D composite codes)	•
Flexible date/time formats	•	Text blocks / User configurable drop-down lists fields	•
Formats for shift coding	•	Auto incrementing/decrementing text, counters and barcodes	•
Field orientation 0°, 90°, 180°, 270°	•	Basic shape drawing	•
Mirror image printing, image rotation	•	Real time clock functions	•
Scalable text including rotation, mirror and inverse printing	•	64MB message store memory	•

Connections/Interfacing	
External inputs (fully software configurable)	3 PNP inputs
External outputs (fully software configurable)	2 relay outputs and 2 PNP +24V outputs
RS232	•
Ethernet	•
USB memory stick support	•
Binary and ASCII comms protocols and Windows drivers	•
Host PC Mode (remote database)	◦
Coder independent network management software	◦
Master/slave unit – link up to four coders to a single controller and user interface	◦

Services	
Power supply	100- 240VAC / 50/60Hz
Operating temperature	5° - 40°C
Humidity Range	85% Max

Options	
Universal bracket system for integrating coder into packaging machinery	◦

Ribbon Range	
Wax / resin ink	•
Resin ink	•

Regulatory Approvals	
• CE Approval • RCM • IEC 609501-1 • AS/NZS 3820 • EN 61000-6-2 • EN 61000-6-4	

Key: • standard ◦ optional

Linx operates a policy of continuous product improvement and reserves the right to change the specification of products without notice.

*Print speeds and throughput are substrate, application and set-up dependent.

^APrint area varies depending on machine handling RH or LH



code



check



capture



care 24x7